

# Sheerweave 4510



- Application:**
- Roller, Roman and Panel Window Blinds
  - Wide Width Windows

- Characteristics:**
- 3200mm

- Technical:**
- Composition: SW4510 is a revolutionary 2x2 sunscreen manufactured using DOW ECOLIBRIUM bio based plasticizers, rather than fossil fuel based Plasticizers. DOW Ecolibrium does not detract from the sunscreen's appearance or performance, and provides a sustainable green alternative to traditional sunscreens, without the PVC smell.
  - Basketweave 2x2
  - Openness Factor: approximately 10%
  - UV Blockage 95%
  - Light Fastness: minimum 6 (Blue Scale) Tested to ISO 105-B02:2014
  - Nominal Weight: 436 gsm
  - Nominal Thickness: 0.69mm
  - Lead Free
  - Printable

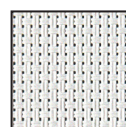
- Protection:**
- Fire Classification: Tested to AS1530 Part II & III, and NFPA 701.
  - Greenguard Gold - accredited for use in sensitive areas eg. schools and healthcare facilities (tested against California section 01359 for low chemical emissions (VOCs))
  - Treated with Microban - giving lifelong Protection
  - Low Odour Emissions (no PVC smell)

- Care:**
- Fabric should be regularly dusted / vacuumed as appropriate. Wipe with water and mild detergent. Do not roll up when fabric is damp.

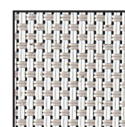
## Colour Range \*



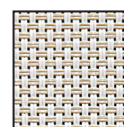
Sheerweave 4510



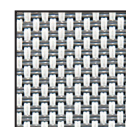
white



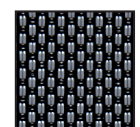
white stone



white linen



white grey



charcoal grey



charcoal

# Sheerweave 4510



**Solar Optical Properties:** Fabrics installed internally zero-degree profile angle

Colour	Solar Optical Properties				Shading Coefficient	
	Ts	Rs	As	Tv	3mm CL	6mm CL
White	20	69	11	23	0.32	0.32
White Linen	19	62	19	23	0.37	0.37
White Grey	15	50	35	20	0.44	0.44
White Stone	17	58	25	22	0.39	0.39
Charcoal Grey	12	11	77	17	0.71	0.67
Charcoal	13	3	84	19	0.76	0.72

Ts: Solar Transmittance

Rs: Solar Reflectance

As: Solar Absorptance

Tv: Visual Transmittance

3mm CL: 3mm Clear Glass

6mm CL: 6mm Clear Glass